

DANTE-LE PCIe SOUND CARD

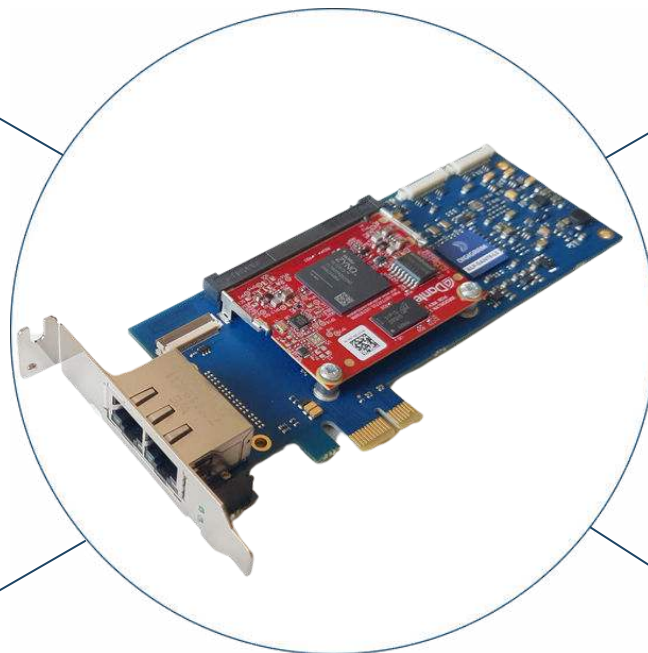
Cost-effective Light Edition, untouched performances

PCIe ALP-DANTE-LE audio interface accommodates **projects on a budget**: the card has just the features you need, no more and no less. You can always count on its versatile and reliable features with untouched audio quality. Its low-profile form-factor design matches all PCs and servers to address applications in the broadcast, public safety, medical, transportation, or industry markets. Its fanless design reduces consumption and increases the card's durability and sustainability.

ALP-DANTE-LE's connectivity, combined with 64 channels of playback and 64 recording channels to/from a Dante network, opens new possibilities to reach beyond usual applications. ALP-DANTE-LE operates under Windows or Linux environments. Built on the same reliable and stable architecture as all ALP-X cards, ALP-DANTE-LE is the perfect match for mission-critical applications where audio is key.

Low profile PCIe*
Fanless design

*low profile bracket pictured here



Compatibility with
AES67 & SMPTE
ST2110-30

2 Eth ports (redundant
or switch mode)

Management via Dante
Controller and Dante
Device Manager

KEY FEATURES



Drivers for
Windows & Linux

64

64 playback channels
64 recording channels



Switching ports mode
Redundant ports mode

1 FORMAT

Form Factor

Low profile PCIe

(Additional full-height bracket provided for installation in standard height slots)

Dimensions

Low profile

L: 168 mm x H: 69 mm x I: 20 mm
L: 6.6 inch; H: 2.7 inch; I: 0.8 inch

Standard profile

L: 168 mm x H: 99 mm x I: 20 mm
L: 6.6 inch; H: 3.9 inch; I: 0.8 inch

Bus

PCI Express™ x1
(x2, x4, x8, x16 compatible)

2 DRIVERS

Supported OS

Windows

As of Windows 10 and Server 2019

Linux:

- Ubuntu ver. 20.04 – kernel 5.15
- Ubuntu ver.22.04 – kernel 6.5
- Debian 11 – kernel 5.10
- Debian 12 – kernel 6.1
- RHEL 9 kernel 5.14

Source code available for compiling drivers for other Linux distributions
Optional service for generating a driver for other Linux distributions

Drivers

Windows: Asio, Wasapi/DirectSound
Linux: Alsa

One Driver Package

Multi-application and multi-card API available to access the parameters

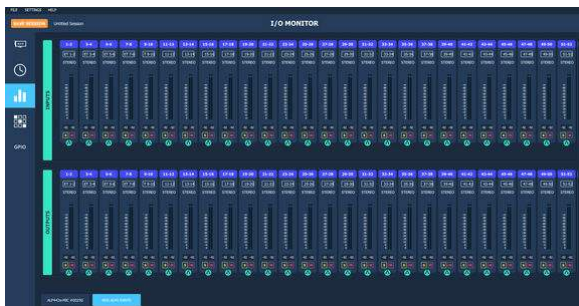
3 CONTROL PANEL

Digigram ALP-X ASIO Settings (Windows)

- Select I/Os used through Asio (others can be used through Wasapi)

Digigram ALP-X Manager (Windows)

- **Asio Control Panel: up to 8 ALP-X cards**
- One unified control panel for the whole ALP-X range
- Manages up to 8 ALP-X cards
- Vu-meters, clock frequency



4 SPECIFICATIONS

Network connectivity

- Configuration
2 x Gbps Eth ports that can be used in redundancy mode (Pri, Sec), or in switching mode

Input and output channels

- 64 x 64 channels at 44.1kHz and 48 kHz
- 32 x 32 channels at 88.2 kHz and 96 kHz
- 16 x 16 channels at 176.4 kHz and 192 kHz

Audio flows

- Maximum 32 input and 32 output streams

Buffering

- Up to 2000 samples per channel (41.7ms at 48 kHz)

AoIP compatibility

- Support for AES67 and SMPTE ST2110-30

Sample format

- PCM 16, 24, 32 bits

Management

- Audinate Dante Controller and Dante Domain Manager

Firmware update

- Via the application AVS-Monitor (available from the Auvitrans WEB site)