



Commentary Unit With Talkback And Dante® Network Audio Interface



VITA MINI

Network Audio Commentary Interface



commentary interface

Highlights

For Commentary Or Talkback

Two Assignable 4 Wire Circuits

Dante® & AES67 Compatible

Monitoring With Left/Both/Right Switching

Network Remote Control & Configuration

Power Via PoE or External DC

Overview

The VITA Mini is a very powerful Dante® network audio interface, in a compact belt pack style. It has a mic/line input and headphone monitoring connection for a single user, and contains two 4 wire circuits. One of these is typically used as an on air channel, and the other as a talkback channel.

The high quality microphone input, with the GlenSound Referee compressor, makes the VITA Mini suitable for on air commentary use, particularly when pitch side.

The flexibility of the talk button configurations means that the VITA Mini can also be used as a talkback unit as part of a Dante® or AES67 network.

VITA Mini is a low cost yet high quality broadcast tool, designed to keep both the company accountant and engineering department happy.





VITA Mini

Network Audio Commentary Interface

Features



- Two Four Wire Circuits**
 The VITA Mini has two 4 wire circuits. These are typically used as main programme on air, with a separate talkback circuit. The push buttons for each circuit are configurable and can operate in different modes, to allow configuration for different types of uses:
 - Latching on/off
 - Momentary push to talk (PTT)
 - Intelligent mode where a short tap is latching, but a longer hold becomes momentary
 - Always on and mutes when pressed (cough)
 - Pressing one button, mutes the other circuit (talkback)

- Headphone Monitoring**
 There is a 6.35mm jack socket for headphone monitoring. Each of the two 4 wire inputs can be selected to be in the left ear, right ear, or both ears of the headphones, depending on the user's preference. The level of each input can also be independently selected.

The headphone amplifier is intelligent and capable of driving correct levels into low or high impedance headphones and capable of connecting directly to both stereo or mono headphones and earpieces.

The headphone monitor also includes sidetone (at a programmable level) - sidetone is the commentator's own voice.

- Single Input**
 The VITA Mini is a single user unit, with one high quality input. The input is mic/mic+48V/line switchable, on a 3 pin XLR, with a variable gain control. As the VITA can be used for on air broadcast, Glensound's Referee compressor limiter is used to control the audio levels and prevent any clipping. The Referee compressor has been developed over many years of working with sports commentators, and provides a gently increasing compression as the input signal approaches clipping. In normal use the compressor is not active as it only starts working as clipping approaches, so normal dynamic range is maintained.





VITA MINI

Network Audio Commentary Interface

Features



- Network Audio Link**
 The VITA Mini is Dante® /AES67 network audio compatible. The network connection is via a single Neutrik XLR RJ45. This link carries:
 - 2 audio inputs
 - 2 audio outputs
 - Power over Ethernet (PoE)
- AES67 Compliant**
 VITA Mini utilises the Ultimo chipset from Audinate (The company behind Dante®). The Ultimo chipset has been designated as AES67 compliant by Audinate and as such it is possible to use the VITA Mini in AES67 network environments.
- Power**
 The VITA Mini has two power sources: PoE from a network switch/midspan injector and external 12V DC on a barrel connector.



- PPM Meter**
 A front panel 4 segment PPM meter showing -12 to +6dB in 6dB steps provides confidence to the user that their outgoing level is set correctly and can also be used as a visual aid to indicate that the microphone has been switched on to the programme output.

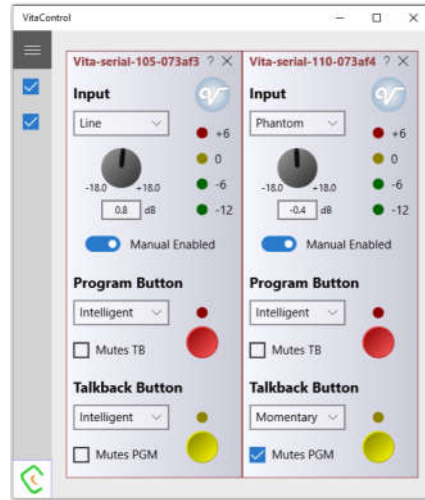




VITA CONTROLLER

Network Remote Control & Configuration

Features



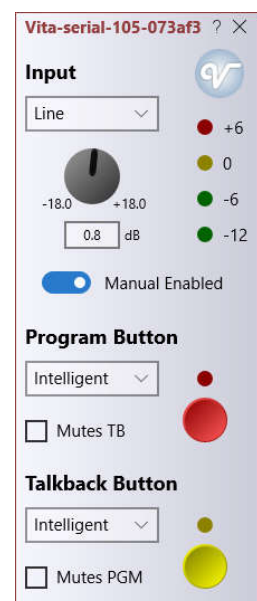
Vita Controller gives full remote control of mic on/off, gain levels and configuration of any number of different VITAs connected across a network.

- Network Remote Control**
 Vita Controller is a Windows 10 PC application, and it can be downloaded for free from <http://www.glensound.com/product-details/vita/> . When launched, Vita Controller scans the network for all connected VITA units, which show up on the left hand side. The function of each VITA is replicated on Vita Controller, with each unit receiving its own visual controller module.
- Remote Control Of Mic Gain Levels**
 There are settings to select mic, mic +48V, or line inputs. A rotary control then acts as the gain level up and down. This all operates in real time.
- Talk Button Configuration**
 Directly clicking on the program or talkback button on Vita Controller will work in the same way as if it was pressed locally on the VITA itself. This allows an engineer to have remote control of the mic on/off function. Each button can be set independently in the following modes:

- Momentary - button is active only when held
- Latching - a single press locks the button on or off
- Intelligent - a short press locks the button, where a longer press acts as momentary
- Cough
- Always ON
- Always OFF

The operation of a button can also mute the other circuit. For example, this is used to mute the program mic when the talkback button is pressed.

- Local Control Security**
 Vita Controller can disable the local controls on the unit. This gives security to the engineer using Vita Controller that they have full control of all levels and operation, and cannot be overridden. If the local controls in Vita Controller are not disabled, adjustment on the local unit will override the remote setting.



VITA Mini

Designed For Sport News & Events

Specification

AUDIO

Mic Input Gain Range

-18dB to +12dB

Dynamic Mic Line Up

58dB

Mic + Phantom Power Line Up

42dB

Line Input Line Up

0dBu (Gain range +/-15dB)

Mic Input Impedance

2k4

Line Input Impedance

>30k

Equivalent Input Noise

124dBu

(22-22kHz RMS terminated 300 Ohms)

Maximum Input Level Before Clipping

Dynamic Mic: -2dBu

Mic + 48V PH: +12dBu

Line: +18dBu

Frequency Response

Mic: > +/-0.25dB 50Hz to 22kHz
(-2 @ 25Hz)

Line: >= -0.1dB 22Hz to 22kHz

THD + Noise (Ref +8dBu)

100Hz = 0.016%

1kHz = 0.012%

10kHz = 0.011%

POWER

DC Input

2.5mm Barrel, Centre +Ve, 9 - 15 Volts

Consumption

<7 Watts

PoE

May be powered by PoE

Complies to: IEEE 802.3af-2003

Classification Class 0

Power On LED

Bright Blue

INCLUDED ITEMS

Handbook

Available by download

RJ45 Network Cable

2 metre Cat5 RJ45plug /RJ45plug cable

Beltclip

Fitted

OPTIONAL ITEM

External PSU

Switch mode power supply terminated with IEC mains plug

Headphone Impedance

32 to 1000 Ohms

(Auto output level to match impedance)

Maximum Headphone Output

+15.8dB into 600 Ohms

Headphone Frequency Response

>= -0.1dB 22Hz to 22kHz

Headphone Noise

-74dB @ lineup (residual noise)

Headphone THD + Noise (ref =8dBu)

0.008% @ 1kHz

Headphone Volume Pot Range

+10dB to Off (+10dB to -20dB configuration option)

NETWORK

Connector

Neutrik Ethercon (also mates with standard RJ45s)

Type

100BASE-TX

Dante® Network Interface

Sample Frequency: 48 - 96kHz

Resolution: 24 Bit

REMOTE CONTROL

General

Windows 10 app. Direct install on PC.

(Not App store download).

PHYSICAL

Size

83 x 140 x 41mm (WxDxH) excl. beltclip

Weight

310g (0.68 pounds)

Mechanics

All aluminium construction, anodized and laser etched, powder coated sides

ENVIRONMENTAL

Operating Temperature

0 to +50 °C (32 to 122 °F)

Storage Temperature

-20 to +70 °C (-4 to 158 °F)

Relative Humidity

0 to 95% non-condensing

SHIPPING SPECIFICATIONS

Weight: 1.81Kg

Shipping Size: 310x260x90mm

Shipping Carton

Rugged export quality cardboard

Specification



Dante®



Glensound